



# Holmes

HOLMES COMMUNITY COLLEGE  
AT-A-GLANCE 2019-2020



# MAKE HOLMES YOUR FIRST Choice

*Where  
is it?*

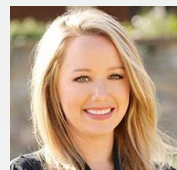
ACADEMIC PATHWAYS	2
CAREER TECHNICAL PATHWAYS	4
HOW TO APPLY	7
SCHOLARSHIPS & GRANTS	8
TUITION & FEES	11
FINANCIAL AID	11
STUDENT ACTIVITIES	12
eLEARNING	15
DUAL ENROLLMENT/ DUAL CREDIT	15
WORKFORCE TRAINING	16
HIGH SCHOOL EQUIV. (GED)	16
ATHLETICS	18
STUDENT HOUSING	21
PUBLIC SAFETY	21

## SCHEDULE A CAMPUS TOUR!

Contact one of our recruiters today!



**LESLIE SPELL**  
Recruiting Specialist  
Goodman Campus  
lspell@holmescc.edu  
(662) 472-9055



**AMANDA LINDSEY**  
Recruiter  
Ridgeland Campus  
alindsey@holmescc.edu  
(601) 605-3320








**HALEY DeNOON**  
Recruiter  
Grenada Campus  
hdenoon@holmescc.edu  
(662) 227-2324

## THINK YOU KNOW HOLMES?

Convenience and quality are just two of the things that you will find at **Holmes Community College**. Not only do we offer more than 80 programs of study, we offer them in a way that works for your life. Whether you are a first-time student wishing to take face-to-face day classes or a working adult interested in evening, online, or hybrid coursework, Holmes seeks to meet the needs of its students by offering something for everyone at all campus locations: Goodman, Grenada and Ridgeland. Classes are also available at the Attala Center in Kosciusko and the Yazoo County Economic Development and Education Center in Yazoo City.

## KEEP IN TOUCH

 facebook.com/holmesccmississippi  
 twitter.com/holmescc  
 youtube.com/user/HolmesCCTv

 holmescc.edu  
 holmesathletics.com



# Academic PATHWAYS

The Office of Academic Programs provides quality academic courses in a variety of accessible formats. These university-transferable courses lead to the Associate of Arts (AA) degree or the academic core for technical programs leading to the Associate of Applied Science degree. Coursework also provides remediation leading to college-level courses and enrichment leading to a better quality of life.

## AVAILABLE CAMPUSES

- DW District Wide
- GR Grenada
- K Kosciusko
- GM Goodman
- R Ridgeland
- @ Online

ARTS/HUMANITIES/LANGUAGE	
<b>Art/Music</b>	
Art	<span style="color: red;">DW</span> <span style="color: blue;">@</span>
Entertainment Industry Studies	<span style="color: red;">DW</span> <span style="color: blue;">@</span>
Music	<span style="color: red;">DW</span> <span style="color: blue;">@</span>
<b>Humanities</b>	
History	<span style="color: red;">DW</span> <span style="color: blue;">@</span>
Philosophy or Religious Studies	<span style="color: red;">DW</span> <span style="color: blue;">@</span>
<b>Language</b>	
Communications/Journalism/Mass Communications	<span style="color: red;">DW</span> <span style="color: blue;">@</span>
English	<span style="color: red;">DW</span> <span style="color: blue;">@</span>
Liberal Arts	<span style="color: red;">DW</span> <span style="color: blue;">@</span>
Spanish	<span style="color: red;">DW</span> <span style="color: blue;">@</span>
<b>BUSINESS</b>	
Accounting	<span style="color: red;">DW</span> <span style="color: blue;">@</span>
Business Administration	<span style="color: red;">DW</span> <span style="color: blue;">@</span>
Economics	<span style="color: red;">DW</span> <span style="color: blue;">@</span>
Finance	<span style="color: red;">DW</span> <span style="color: blue;">@</span>
Management	<span style="color: red;">DW</span> <span style="color: blue;">@</span>
Marketing	<span style="color: red;">DW</span> <span style="color: blue;">@</span>
<b>EDUCATION</b>	
Child Development/Child Care & Family Education	<span style="color: red;">DW</span> <span style="color: blue;">@</span>
Elementary/Special Education	<span style="color: red;">DW</span> <span style="color: blue;">@</span>
<b>Secondary Education</b>	
Secondary Ed. - Biology/Science	<span style="color: red;">DW</span> <span style="color: blue;">@</span>
Secondary Ed. - Chemistry/Physical Science	<span style="color: red;">DW</span> <span style="color: blue;">@</span>
Secondary Ed. - English	<span style="color: red;">DW</span> <span style="color: blue;">@</span>
Secondary Ed. - Mathematics	<span style="color: red;">DW</span> <span style="color: blue;">@</span>
Secondary Ed. - Music-Instrument	<span style="color: red;">DW</span> <span style="color: blue;">@</span>
Secondary Ed. - Music-Piano	<span style="color: red;">DW</span> <span style="color: blue;">@</span>
Secondary Ed. - Music-Voice	<span style="color: red;">DW</span> <span style="color: blue;">@</span>
Secondary Ed. - Physical Education/Kinesiology	<span style="color: red;">DW</span> <span style="color: blue;">@</span>
Secondary Ed. - Physics	<span style="color: red;">DW</span> <span style="color: blue;">@</span>
Secondary Ed. - Social Studies	<span style="color: red;">DW</span> <span style="color: blue;">@</span>

GENERAL COLLEGE	
General College Studies	<span style="color: red;">DW</span> <span style="color: blue;">@</span>
<b>HEALTH SCIENCES</b>	
Biological Science	<span style="color: red;">DW</span> <span style="color: blue;">@</span>
Pre-Allied Health	<span style="color: red;">DW</span> <span style="color: blue;">@</span>
<b>Dentistry</b>	
Pre-Dental	<span style="color: red;">DW</span> <span style="color: blue;">@</span>
Pre-Dental Hygiene	<span style="color: red;">DW</span> <span style="color: blue;">@</span>
<b>Health Related</b>	
Health Informatics & Information Management	<span style="color: red;">DW</span> <span style="color: blue;">@</span>
Health Sciences	<span style="color: red;">DW</span> <span style="color: blue;">@</span>
Pre-Medical Laboratory Science	<span style="color: red;">DW</span> <span style="color: blue;">@</span>
Pre-Occupational Therapy	<span style="color: red;">DW</span> <span style="color: blue;">@</span>
Pre-Physical Therapy	<span style="color: red;">DW</span> <span style="color: blue;">@</span>
Pre-Radiologic Sciences	<span style="color: red;">DW</span> <span style="color: blue;">@</span>
<b>Medicine</b>	
Pre-Medical	<span style="color: red;">DW</span> <span style="color: blue;">@</span>
Pre-Nursing	<span style="color: red;">DW</span> <span style="color: blue;">@</span>
<b>Pharmacy</b>	
Pre-Pharmacy	<span style="color: red;">DW</span> <span style="color: blue;">@</span>
<b>Veterinary</b>	
Pre-Veterinary	<span style="color: red;">DW</span> <span style="color: blue;">@</span>
Pre-Veterinary Medical Technology	<span style="color: red;">DW</span> <span style="color: blue;">@</span>
<b>KINESIOLOGY</b>	
Athletic Training	<span style="color: red;">DW</span> <span style="color: blue;">@</span>
Exercise Science/Kinesiology	<span style="color: red;">DW</span> <span style="color: blue;">@</span>
Recreation	<span style="color: red;">DW</span> <span style="color: blue;">@</span>
Sport Management	<span style="color: red;">DW</span> <span style="color: blue;">@</span>

PUBLIC SAFETY/SOCIAL & BEHAVIORAL SCIENCE	
<b>Public Safety</b>	
Criminal Justice	<span style="color: red;">DW</span> <span style="color: blue;">@</span>
Forensic Science	<span style="color: red;">DW</span> <span style="color: blue;">@</span>
Pre-Law/Legal Studies	<span style="color: red;">DW</span> <span style="color: blue;">@</span>
<b>Social &amp; Behavioral Science</b>	
Psychology	<span style="color: red;">DW</span> <span style="color: blue;">@</span>
Social Work/Sociology	<span style="color: red;">DW</span> <span style="color: blue;">@</span>
<b>SCIENCE, TECHNOLOGY, ENGINEERING &amp; MATHEMATICS (STEM)</b>	
<b>Engineering</b>	
Chemical/Biological/Petroleum Engineering	<span style="color: red;">DW</span> <span style="color: blue;">@</span>
Civil/Mechanical/Aerospace Engineering	<span style="color: red;">DW</span> <span style="color: blue;">@</span>
Electrical/Computer/Software Engineering	<span style="color: red;">DW</span> <span style="color: blue;">@</span>
<b>Science, Technology &amp; Mathematics</b>	
Agricultural Sciences	<span style="color: red;">DW</span> <span style="color: blue;">@</span>
Aviation Management	<span style="color: red;">DW</span> <span style="color: blue;">@</span>
Chemistry	<span style="color: red;">DW</span> <span style="color: blue;">@</span>
Computer Science	<span style="color: red;">DW</span> <span style="color: blue;">@</span>
Forestry	<span style="color: red;">DW</span> <span style="color: blue;">@</span>
Mathematics	<span style="color: red;">DW</span> <span style="color: blue;">@</span>
Wildlife, Fisheries and Aquaculture	<span style="color: red;">DW</span> <span style="color: blue;">@</span>



# Career Technical PATHWAYS

Career Technical programs lead to an Associate of Applied Science (AAS) degree or Advanced Technical, Technical, and Career Certificates. Some of the Career Technical programs at Holmes also offer transferability to baccalaureate programs.

## AVAILABLE CAMPUSES

- DW District Wide
- GR Grenada
- K Kosciusko
- GM Goodman
- R Ridgeland
- @ Online

### HEALTH SCIENCES

Associate Degree Nursing	<span style="color: blue;">GR</span> <span style="color: black;">R</span>
Emergency Medical Sciences - Basic	<span style="color: blue;">GR</span> <span style="color: black;">R</span>
Emergency Medical Sciences - Critical Care	<span style="color: black;">R</span>
Emergency Medical Sciences - Paramedic	<span style="color: blue;">GR</span> <span style="color: black;">R</span>
Occupational Therapy Assistant Technology	<span style="color: black;">R</span>
Physical Therapist Assistant	<span style="color: blue;">GR</span>
Practical Nursing	<span style="color: blue;">GR</span> <span style="color: blue;">K</span> <span style="color: black;">R</span>
Surgical Technology	<span style="color: blue;">GR</span> <span style="color: black;">R</span>

### INDUSTRIAL STUDIES

Architectural Engineering Technology	<span style="color: grey;">GM</span>
Automotive Technology	<span style="color: grey;">GM</span>
Collision Repair Technology	<span style="color: grey;">GM</span>
Construction Technology	<span style="color: black;">R</span>
Drafting and Design Technology	<span style="color: blue;">GR</span>
Heating/Vent/AC/Refrigeration Technology	<span style="color: grey;">GM</span> <span style="color: blue;">GR</span>
Industrial Engineering Management Technology	<span style="color: black;">R</span>
Industrial Maintenance Mechanics	<span style="color: black;">R</span>
Industrial Technology	<span style="color: grey;">GM</span>
Interior Design Technology	<span style="color: black;">R</span>
Industrial Maintenance Technology	<span style="color: blue;">GR</span>
Precision Machining Technology	<span style="color: blue;">GR</span>
Welding and Cutting Technology	<span style="color: red;">DW</span>

### PROFESSIONAL STUDIES

Accounting Technology	<span style="color: red;">DW</span> <span style="color: blue;">@</span>
Administrative Office Technology	<span style="color: red;">DW</span> <span style="color: blue;">@</span>
Billing and Coding Technology	<span style="color: red;">DW</span> <span style="color: blue;">@</span>
Business Management Technology	<span style="color: red;">DW</span> <span style="color: blue;">K</span> <span style="color: blue;">@</span>
Computer Networking Technology	<span style="color: black;">R</span>
Computer Engineering Technology	<span style="color: blue;">GR</span>
Conservation Law Enforcement Technology	<span style="color: blue;">GR</span>
Cosmetology	<span style="color: grey;">GM</span>
Criminal Justice Administration Technology	<span style="color: red;">DW</span> <span style="color: blue;">@</span>
Forest Technology	<span style="color: blue;">GR</span>
Medical Office Technology	<span style="color: red;">DW</span> <span style="color: blue;">@</span>
Paralegal Technology	<span style="color: black;">R</span> <span style="color: blue;">@</span>
Software Engineering Technology	<span style="color: black;">R</span>

# ADVANCE YOUR Career

# BECOMING A HOLMES Bulldog

## How to Apply

- Visit [holmescc.edu](http://holmescc.edu) and click on “**Enroll Now.**”
- From “Enroll Now,” click “**Start Here.**”
- Enter the requested information on the following page and click **submit.**
- Click the “**Admissions Ticket.**”
- Create your **Login ID** and **PIN.**
- After you successfully complete each portion and submit your application, you will receive a “**SUCCESS!**” message. If you receive any other message, please contact the Admissions Office at the appropriate campus.
- Select the “**Enroll Now**” link below your “**SUCCESS!**” message. This action will return you to the steps required before you can register for classes.
- Watch the **Orientation videos** in Step 3 of “Enroll Now.” After viewing the videos, select “**Agree and Continue**” to return to the final steps of “Enroll Now.”



## Congrats

Your acceptance letter is available in Step 1 of “Enroll Now” immediately following the successful submission of your application. An information packet will be mailed within three weeks of submitting your application. If you do not receive the packet, please contact the Admissions Office at the appropriate campus.

## Checklist

- Schedule a tour
- Apply to Holmes
- Submit high school and/or college transcripts
- Submit test scores (ACT or SAT)
- Apply for federal aid (FAFSA)
- Submit student housing application (if applicable)
- Get involved! Schedule auditions, tryouts, or interviews for scholarship opportunities.

4

EVENTS THROUGHOUT  
THE YEAR TO HELP  
YOU REGISTER

### NEED HELP REGISTERING FOR CLASSES?

We understand that choosing your classes and creating your schedule can seem stressful. We have dedicated events, such as Freshman Friday, Make Yourself at Holmes, and on-site registration, where you can meet with advisors, create your schedule, and leave campus ready for your first day of class.

# Scholarships & Grants

## SCHOLARSHIPS

All scholarship recipients must maintain minimum cumulative GPA and enrollment requirements in order to continue to receive scholarship funds. Scholarships are available for fall and spring semesters only, with most limited to Mississippi residents.

## BOARD OF TRUSTEES SCHOLARSHIP

The Board of Trustees Scholarship is awarded to students with enhanced ACT composite scores of 28 or higher. This scholarship covers the equivalency of tuition, room, and board costs (if applicable).

## FOUNDATION SCHOLARSHIP

Scholarships are available through the foundation for students in specific majors and programs of study. The application is located in the MyHolmes portal and the deadline is May 1.

## PRESIDENT'S SCHOLARSHIP

The President's Scholarship is awarded to students with an enhanced ACT composite score of 24 to 27. This scholarship covers the equivalency of one-half the cost of tuition, room, and board (if applicable).

## PERFORMANCE SCHOLARSHIP

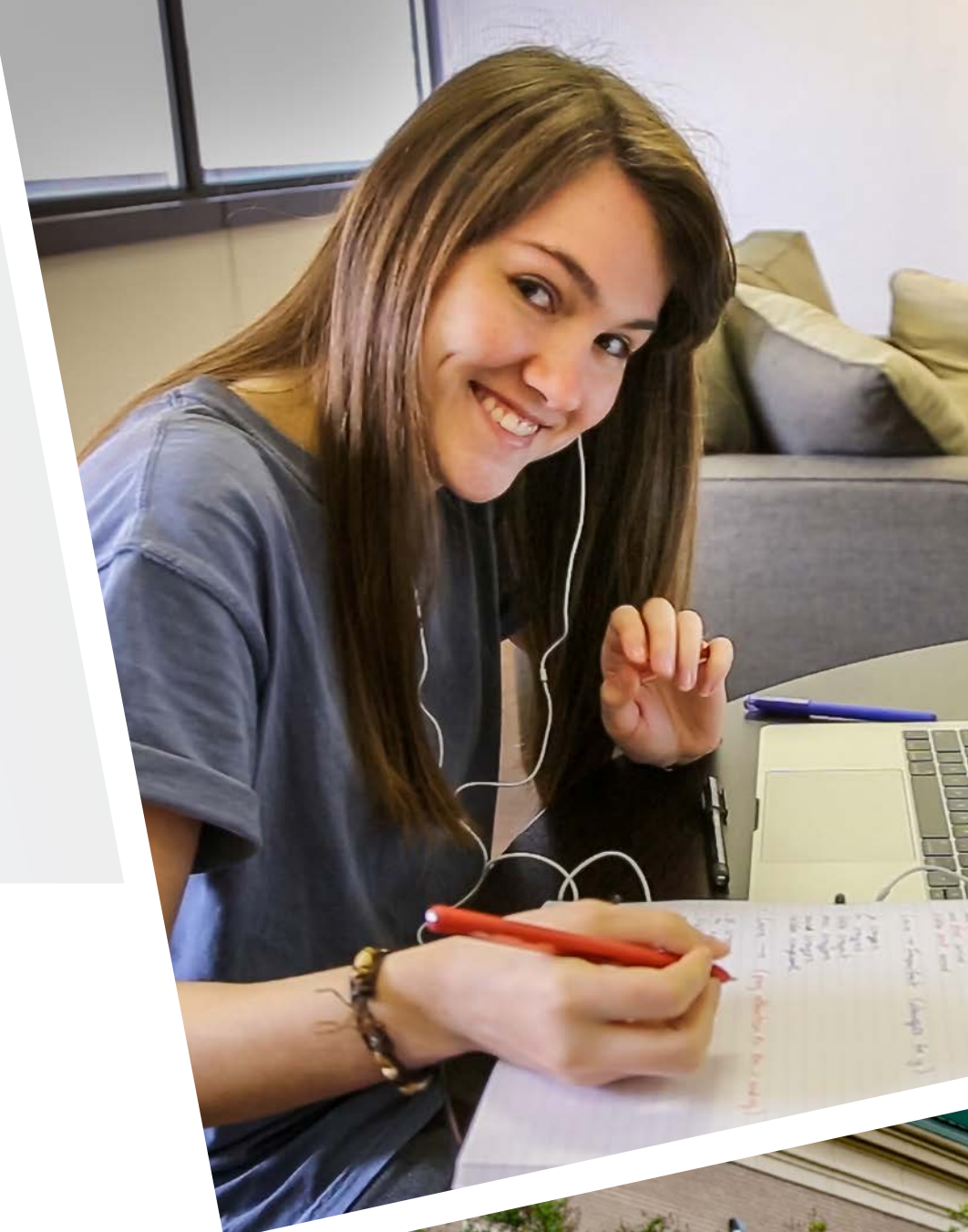
Scholarships are available for students who excel within various departments. This includes programs such as choral music, theater, cheer, band, and much more.

## DEAN'S SCHOLARSHIP

The Dean's Scholarship is awarded to students with an enhanced ACT composite score of 20 to 23. This award covers the equivalency of the cost of tuition.

## ATHLETIC SCHOLARSHIP

Scholarships are available for students who excel in athletics. This includes programs such as baseball, basketball (men and women), football, soccer (men and women), and softball.



## GRANTS

Grants are gift awards made available to students based on financial need. In order to apply for a grant to attend Holmes Community College, all students must complete the Free Application for Federal Student Aid (FAFSA) to determine need. This application is submitted online and must be updated each school year. The application can be found at [www.fafsa.ed.gov](http://www.fafsa.ed.gov).

## SUMNER'S GRANT

This grant is for residents of Attala, Choctaw, Carroll, Montgomery, and Webster counties who desire and can benefit from a higher education. An application must be submitted each school year and can be found at [holmescc.edu/financial\\_aid/grants\\_scholarships.sumner.aspx](http://holmescc.edu/financial_aid/grants_scholarships.sumner.aspx).

## FEDERAL SUPPLEMENTAL EDUCATIONAL OPPORTUNITY GRANT

This grant is for the student who shows great need and is eligible for Title IV funds. Funds are limited and approved on a case-by-case basis. Students must be enrolled at least half-time to be eligible.

## MISSISSIPPI RESIDENT TUITION ASSISTANCE GRANT (MTAG)

The MTAG is a state-sponsored grant available to undergraduate students. Students must enroll in and complete 15 hours a semester. An application must be submitted each school year and can be found at [holmescc.edu/financial\\_aid/grants\\_scholarships/stategrants](http://holmescc.edu/financial_aid/grants_scholarships/stategrants).

## FEDERAL PELL GRANT

The Pell Grant is a federal program, which makes funds available to eligible students attending an approved post-secondary institution.

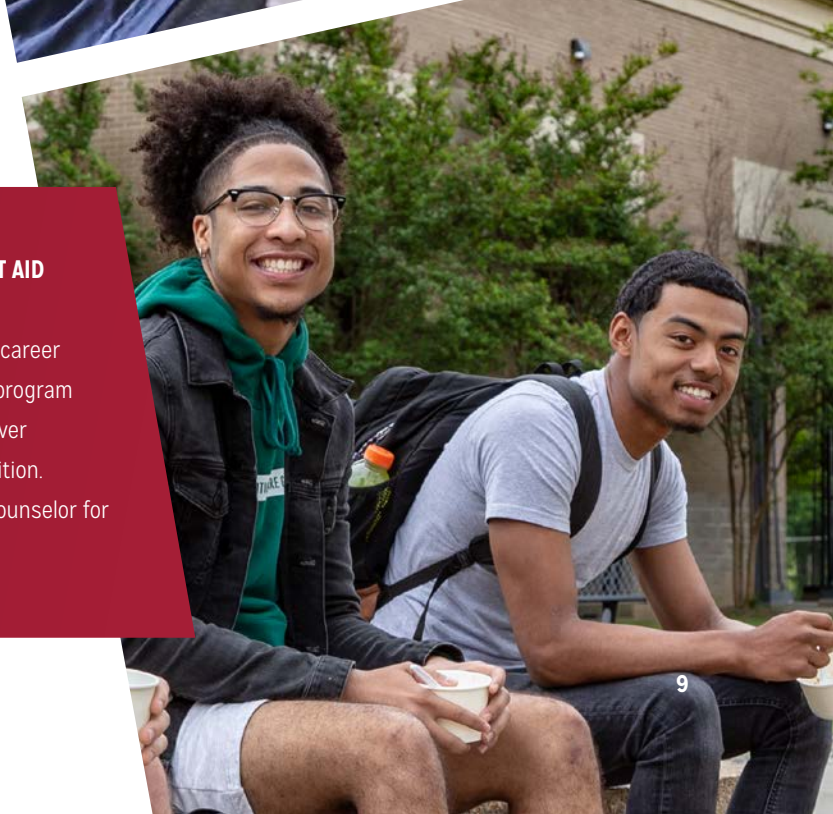
## CALHOUN COUNTY TUITION ASSISTANCE GRANT PROGRAM

This grant is for residents of Calhoun County. The program will cover tuition only after all federal and state grants, as well as other financial aid and scholarships, are applied. Tuition is funded for four consecutive semesters (excluding summer).



## CAREER TECHNICAL STUDENT AID

The MS Works Career Tech Scholarships are available to career technical students in select program areas. These scholarships cover amounts up to the cost of tuition. Contact a Career Technical Counselor for more information.





# TIME TO INVEST IN Yourself

### NET PRICE CALCULATOR

This handy online tool will estimate your cost of attending Holmes. Get a customized total of your tuition, fees, books, supplies, room and board. Also see an estimate of grants and scholarships you may receive. Find it at [holmescc.edu](http://holmescc.edu).

## Tuition & Fees

### COMMUTER STUDENTS

#### PART TIME

Part-time	\$120/hr
Fees	\$ 17/hr

#### ENROLLED IN 12 HOURS

Tuition	\$ 1,440
Fees	\$ 204
Total	\$ 1,644

#### ENROLLED IN 14 HOURS

Tuition	\$ 1,680
Fees	\$ 238
Total	\$ 1,918

#### ENROLLED IN 15 HOURS

Tuition	\$ 1,300
Fees	\$ 255
Total	\$ 1,555

### DORMITORY STUDENTS

#### 5 DAY ROOM & BOARD

Tuition/Fees	\$ 1,555
Housing	\$ 700
Meals	\$ 825
Total	\$ 3,080

### OUT-OF-STATE STUDENT FEES

Full-time Student	\$ 1,290
Part-time Student Fee	\$ 110/hr

### OTHER FEES (Non-Refundable)

Graduation Fee (Marching)	\$ 35
Graduation Fee (Non-Marching)	\$ 15
Student ID Replacement	\$ 25
Housing Application Fee	\$ 50
Key Replacement Fee	\$ 50
Online Classes (per hr)	\$ 10

\*Career Technical programs also have fees that vary by program. Please contact a Career Technical Office for more information on those fees.

## Financial Aid

### APPLYING FOR FINANCIAL AID

- OPTION 1** Join us for FAFSA Fridays! Get one-on-one help applying for financial aid every Friday from 9 a.m. until 11:30 a.m. at our Ridgeland, Grenada, or Goodman campuses.
- OPTION 2** Go to [holmescc.edu](http://holmescc.edu) and click on the Financial Aid link to apply for financial aid, scholarships, and grants. **You can also access the FAFSA application at [fafsa.ed.gov](http://fafsa.ed.gov).** All information, including your financial aid, will be available through the student portal, MyHolmes, once you have your student ID and login information.

### STUDENT LOANS

Student loans are available to qualified students and must be repaid. Students must complete the FAFSA plus maintain satisfactory academic progress and enrollment requirements to become eligible.

### OTHER OPTIONS

You may also qualify for other financial aid options. Please refer to the Holmes CC District Bulletin or visit [holmescc.edu/financial\\_aid](http://holmescc.edu/financial_aid).

### ADVANTAGE EDUCATION LOANS

This low-interest loan is offered through the Kentucky Higher Education Student Loan Corporation. You can find the application at [khea.com/website/kyadvantageloans/kaelinfo](http://khea.com/website/kyadvantageloans/kaelinfo) or via the Holmes financial aid website.

### DIRECT FEDERAL STUDENT LOANS

These subsidized and unsubsidized low-interest loans are offered through the Title IV Federal Aid Program. Contact the Financial Aid Office for information.

### WHY IS THE FAFSA SO IMPORTANT?

All financial aid, even scholarships and grants, are only awarded to students who complete the Free Application For Student Aid.

DATES YOU WILL ATTEND HOLMES	SUBMIT FAFSA	DATES TO SUBMIT FAFSA	USE TAX INFO FROM
August 1, 2019 - July 31, 2020	2019 - 2020	October 1, 2018 - June 30, 2020	2017
August 1, 2020 - July 31, 2021	2020 - 2021	October 1, 2019 - June 30, 2021	2018

# Student Activities

Holmes offers a variety of social, educational, and recreational activities for the student body on all three campuses. Enhance your leadership skills, make a difference on campus, explore your interests, make lasting friendships, and have fun. Whether you are interested in student government, athletics, drama, honor society, religious organizations, choir, or dance, Holmes has a spot for you!

## AVAILABLE CAMPUSES

- DW District Wide
- GM Goodman
- GR Grenada
- R Ridgeland

Ambassadors	<span style="color: red;">DW</span>	Holme-Towne Players	<span style="color: blue;">GM</span>
Associate Degree Student Nurses Assoc.	<span style="color: black;">R</span> <span style="color: blue;">GR</span>	Indoor Drumline	<span style="color: blue;">GM</span>
Association of Legal Students	<span style="color: black;">R</span>	Information Systems Tech. Club	<span style="color: black;">R</span>
Band	<span style="color: blue;">GM</span>	M.O.S.A.I.C.	<span style="color: blue;">GM</span>
Baptist Student Union - BSU	<span style="color: red;">DW</span>	Phi Beta Lambda	<span style="color: black;">R</span>
Cheerleaders	<span style="color: blue;">GM</span>	Phi Theta Kappa	<span style="color: red;">DW</span>
Chi Alpha Epsilon	<span style="color: blue;">GM</span>	Reformed University Fellowship	<span style="color: blue;">GM</span>
Coachmen Singers	<span style="color: blue;">GM</span>	Rotoract	<span style="color: black;">R</span>
Concert Band	<span style="color: blue;">GM</span>	Sigma Phi Sigma	<span style="color: black;">R</span>
Concert Chorale	<span style="color: blue;">GM</span>	SkillsUSA	<span style="color: red;">DW</span>
Creative Arts Club	<span style="color: black;">R</span>	Social Science Forum	<span style="color: black;">R</span>
Criminal Justice Society	<span style="color: black;">R</span>	Steel Drum Band	<span style="color: blue;">GM</span>
Delta Psi Omega	<span style="color: blue;">GM</span>	Student Government Assoc.	<span style="color: red;">DW</span>
Engineering Technology Club	<span style="color: blue;">GM</span>	Student Occupational Therapy Assoc.	<span style="color: black;">R</span>
Fellowship of Christian Athletes	<span style="color: blue;">GM</span>	Student Practical Nursing Org.	<span style="color: red;">DW</span>
Future Educators of America	<span style="color: blue;">GM</span>	Student Publications	<span style="color: red;">DW</span>
Focus Factor	<span style="color: black;">R</span>	Surgical Technology Club	<span style="color: blue;">GR</span>
Holmes Connection!	<span style="color: blue;">GM</span>	Voices of Praise Gospel Choir	<span style="color: blue;">GM</span>
Holmes Gaming Experience	<span style="color: blue;">GM</span>	Wesley Foundation	<span style="color: blue;">GR</span>
Holmes Plus	<span style="color: blue;">GM</span>		

## FUN EVENTS FOR ALL STUDENTS THROUGHOUT THE YEAR!

- Beauty Review
- Bulldog Bash
- Halloween Costume Contest
- Homecoming
- Intramural Sports
- Mud Run
- Spring Fling
- Spring Concert Series
- Welcome Week
- Who's Who

12

NUMBER OF OBSTACLES  
CREATED FOR THE  
2019 "MUD RUN"

### WHAT'S YOUR FAVORITE STUDENT ACTIVITY?

Many of our students shared that their favorite event was the "Mud Run" hosted on the Goodman Campus. Some ran, some walked, but all enjoyed climbing walls, mud pits, rope swings, and more! The highlight was the 150-foot, soap-covered slip and slide at the finish line.



BULLDOGS  
ALWAYS  
Have fun





# OPTIONS THAT WORK For you

### WE HAVE BEEN AROUND SINCE DIAL-UP.

Happy birthday to Holmes eLearning! Our program began in 1999, making it older than most of our freshmen students. We have been a pioneer in online learning for two decades and continue to lead the way in Mississippi as well as the nation.

## e Learning

Looking for a flexible alternative to traditional classroom courses that fits into your schedule? Holmes' award-winning eLearning option may be for you! Unlike some schools, an online education at Holmes is affordable, coming in at just a fraction of the cost of national for-profit schools. Our instructors are accessible, and our class sizes are limited.

### CONSIDERING AN ONLINE COURSE?

- Can be completed "anywhere, anytime, online"
- Requires two proctored tests
- Responsible for weekly deadlines

### HOW CAN AN ONLINE COURSE BENEFIT YOU?

- Work while completing your education
- Save time and gas
- Never have to leave home
- Affordable and cost effective

### WHAT DEGREES CAN I EARN ONLINE?

- Associate of Applied Science degree
- Associate of Arts degree
- Certificates

### COMPLETE THESE PROGRAMS PRIMARILY ONLINE

- Business Office Technology
- Paralegal Studies
- Criminal Justice
- All Academic Pathways

### PROCTORING LAB

Holmes CC and MSVCC provide proctoring services on campus and through virtual proctoring. These appointments are scheduled through Smarter Proctoring located in the student's online course.

## Dual enrollment/Dual credit

A dual enrollment student is enrolled in an institution of higher education while still enrolled in high school. A dual credit student is enrolled in an institution of higher education while enrolled in high school and receives both high school credit and college credit for postsecondary coursework.

### REQUIREMENTS FOR ACADEMIC CLASSES\*

- Earn at least 14 core high school units, such as English, mathematics, science, social science, or foreign language and/or have a high school junior status, or score a minimum composite ACT score of 30 or equivalent SAT score.
- Have an overall "B" average (GPA of 3.0 out of 4.0) on all high school courses.
- Obtain an unconditional recommendation from your high school counselor or principal.
- Request an official transcript be sent to the Admissions and Records Office at Holmes CC at least 10 days prior to the beginning of the enrollment period.

### REQUIREMENTS FOR CAREER TECHNICAL CLASSES\*

- Have a high school sophomore status or higher.
- Have an overall high school GPA of 2.0 on a 4.0 scale.
- Obtain an unconditional recommendation from your school administrator, counselor, or CTE instructor.
- Request an official transcript be sent to the Admissions and Records Office at Holmes CC at least 10 days prior to the beginning of the enrollment period.

High school students who are interested in program participation should contact the District Coordinator for Dual Enrollment/Dual Credit.

\*Homeschool students must submit a notarized transcript.



# EXPAND YOUR Skills

## Workforce Spotlight

### ELECTRICAL LINEMAN PROGRAM

Upon completion of 16 weeks of hands-on training, graduates are qualified to make connections of meter loops, transformers, and other equipment on de-energized poles; operate bucket trucks, digger derrick trucks, forklifts, etc.; check voltage and amperes; and recognize electrical hazards. <sup>GM</sup>

### HIGH SCHOOL EQUIVALENCY

Improve your quality of life as well as your earning power – get your High School Equivalency (HSE) Diploma through Holmes! We offer HSE classes at locations throughout our district - free of charge. Join classes in Ridgeland, Yazoo, Canton, Eupora, Lexington, and Kosciusko. Night classes are only offered at our Ridgeland Campus. <sup>DW</sup>

### CONCRETE MIXER/TRUCK DRIVER TRAINING PROGRAM

If you are interested in working as a concrete mixer truck driver, you will need to obtain a commercial driver's license which requires truck driver training. Holmes Workforce can provide you with the training you need and help you network with potential employers. New classes begin every six to eight weeks. <sup>R</sup>

### NATIONAL CAREER READINESS CERTIFICATE (NCRC)

Whether you are thinking about the next phase of your education, launching a new career, or making a transition in your current job, the ACT® WorkKeys® assessment system can help. This measures essential workplace skills that can affect job performance and increase opportunities for career changes and advancement. A National Career Readiness Certificate (NCRC) is earned by successfully completing three assessments: Applied Math, Workplace Documents, and Graphic Literacy. <sup>DW</sup>

## Workforce Development

### WHAT IS WORKFORCE DEVELOPMENT?

- The Workforce Training Programs are designed to meet specific training requirements of a company or organization.
- Workforce programs are NON-CREDIT based.
- Depending on the type of training, classes may last a half-day or several weeks.
- Our primary focus is serving the business community to provide additional training and enhanced skills to people in their current jobs or train individuals entering employment.
- When industry has a need, Holmes' Workforce Development is the partner committed to the creation of training programs to meet or exceed that need.

### CAREER TRAINING

- Manufacturing Skills Basic Certification
- Concrete Mixer/Truck Driver
- Electrical Lineman
- Professional Truck Driver

### LANGUAGE SKILLS

- Conversational Spanish

### JOB SKILLS TRAINING

- Communication Skills
- Conflict Resolution
- Customer Service
- Decision-Making Skills
- Essentials of Human Resources
- Improving Work Ethics and Habits
- Presentation Skills
- Supporting/Dealing with Change
- Team Dynamics
- Time-Management Skills
- Workplace Etiquette & Diversity

### SUPERVISORY/ MANAGEMENT

- Building Successful Teams
- Effective Discipline/Evaluations
- Leadership/Management

### PREP FOR CERTIFICATIONS

- National Career Readiness Certificate (NCRC)
- Project Management Professional Prep
- OSHA
- SHRM Learning System (SHRM-CP/SHRM-SCP)

### COMPUTER SKILLS

- Introduction to Computers
- Microsoft Office Suite Programs

### MAINTENANCE & MANUFACTURING

- SolidWorks Beginning & Advanced
- Blueprint Reading
- Material Handling/Forklift Operation
- Mechatronics
- Gas Metal Arc & Tungsten Arc Welding
- Hydraulics/Fluid Power
- Mechanical Drives
- Introduction to AutoCAD
- Industrial Electricity I (AC/DC)
- Motor Controls
- Machine Shop
- PLC I & PLC II

### HEALTH RELATED TRAINING

- Advanced Cardiac Life Support (ACLS)
- Advanced Medical Life Support
- Basic Life Support
- CPR/AED/First Aid
- EMS Safety
- EMT Refresher
- Emergency Pediatric Care
- First Responder Refresher
- Paramedic Refresher
- Pediatric Advanced Life Support (PALS)
- Prehospital Trauma Life Support

# Athletics

## SPORTS OFFERED AT HOLMES

Baseball	GM	Men's Soccer	R
Men's Basketball	GM	Women's Soccer	R
Women's Basketball	GM	Softball	GM
Cheerleading	GM	Tennis	GM
Football	GM		

### BASEBALL

Holmes baseball has brought multiple accolades to the college since 1996, such as a North Division Championship, appearances at nine MACJC and seven Region XXIII tournaments, and numerous MACJC/NJCAA Academic Team awards and individual selections. Holmes also has 27 alumni who played professionally and nine who coach at the college level.

### WOMEN'S BASKETBALL

Since 2012, the women's basketball team boasts a North Division Championship, numerous appearances in the MACJC and Region XXIII tournaments, and quite a few MACJC/NJCAA academic individual selections. Women's basketball had a former Bulldog become a professional athlete as well.

### WOMEN'S SOCCER

Women's soccer continues to make history at Holmes. In 2018, they obtained a top 10 national ranking - the first since the program's inception. They were MACJC finalists in 2016 and 2017 as well as back-to-back MACJC North Division Champions from 2016 through 2018. The team has also obtained numerous MACJC/NJCAA Academic Team awards and individual selections.

### FOOTBALL

The Holmes football team won the Graphic Edge Bowl Championship in 2016. The team has also garnered multiple MACJC/NJCAA academic individual selections and has one of the top rushing offenses in the NJCAA. Over the years, the Bulldogs have produced 32 NFL players.

### MEN'S BASKETBALL

Since 2005, the men's basketball team boasts several MACJC/NJCAA academic individual selections, two State Championships, two Region XXIII titles, and two NJCAA tournament appearances, finishing in the Elite Eight in 2015. A former Bulldog has recently become a NBA player.

### MEN'S SOCCER

The men's soccer excels on and off the field. When not playing soccer, they are serving meals at the Ronald McDonald House or running races for charity. They have a host of MACJC tournament appearances, including the 2018 MACJC quarterfinals. Also in 2018, one Bulldog continued his career at Belhaven University.

### TENNIS

The Holmes tennis teams (men and women) have had several MACJC and Region XXIII tournament appearances over the years. They have also had numerous four-year college signees as well as MACJC/NJCAA Academic Team awards and individual selections..

### CHEER

The Bulldog cheerleaders, like all Holmes athletic groups, are extremely active in serving the local community and serving in various capacities on campus. Each year, the cheerleaders bring home a considerable amount of awards from UCA camps and send numerous transfers to four-year college and university cheer squads.

### SOFTBALL

The Lady Bulldogs have multiple MACJC and Region XXIII tournament appearances as well as numerous All-State/All-Region selections. The softball team has also had several MACJC/NJCAA Academic Team awards and individual selections.



JOIN A  
WINNING  
Team

3X  
WOMEN'S SOCCER IS THE  
3-TIME MACJC NORTH  
DIVISION CHAMPS



# MAKE YOURSELF AT Home

## Student Housing

### APPLYING FOR STUDENT HOUSING

- Please carefully read Holmes' student housing policies, which are listed at the top of the online housing application.
- Complete all information and select Submit. You should receive a message confirming your application was submitted successfully. Incomplete applications will not be accepted.
- Go to holmescc.edu and click on the housing link at the bottom of the page.
- Select Freshman Housing Application link on the right side of the page.

*Did you know you can submit your housing application at any time, even before applying for admission to the college? Better yet, there is no deposit required.*

## Public Safety

Holmes Community College is dedicated to the safety of its faculty, staff, students, and visitors. Police officers are located on Goodman, Grenada and Ridgeland campuses. Under state law, the Holmes Community College Campus Police are authorized to enforce the general laws of the State of Mississippi with the powers of a state constable.

### RAVE

RAVE is the emergency notification system for Holmes Community College faculty, staff, and students. In the event of an emergency, such as a tornado or dangerous person(s) on or around campus, you can be notified via your smart phone by text message or email. School closing messages due to inclement weather can also be sent through the RAVE alert system.

To sign up for Rave notifications, log on to MyHolmes. You will see RAVE in the third column of the home page. Click on RAVE and follow the simple instructions.

Holmes Community College does not discriminate on the basis of race, color, religion, national origin, gender, disability, or age in its educational programs and activities, employment or admissions. The following person has been designated to handle inquiries and grievances regarding non-discrimination, compliance policies, and procedures for the College: Compliance Officer, (662) 472-9429. Written inquiries may be emailed to: [compliance@holmescc.edu](mailto:compliance@holmescc.edu) or mailed to: Compliance Office, 412 W. Ridgeland Avenue, Ridgeland, MS 39157.

Holmes Community College is accredited by the Southern Association of Colleges and Schools Commission on Colleges to award associate degrees and certificates. Contact the Southern Association of Colleges and Schools Commission on Colleges at 1866 Southern Lane, Decatur, Georgia, 30033-4097 or call (404) 679-4500 for questions about the accreditation of Holmes Community College.

# **H**olmes *Get in touch!*

## ACADEMIC PROGRAMS

- GM (662) 472-9165
- GR (662) 227-2354
- R (601) 605-3348

## ADMISSIONS & RECORDS

- GM (662) 472-9073
  - GR (662) 227-2328
  - R (601) 605-3309
- P.O. Box 398, Goodman, MS 39079  
admissions@holmescc.edu

## BUSINESS OFFICES

- GM (662) 472-9037
  - R (601) 605-3307
  - GR (662) 227-2357
- P.O. Box 399, Goodman, MS 39079  
businessoffice@holmescc.edu

## CAREER TECHNICAL EDUCATION

- GM (662) 472-9058
- GR (662) 227-2350
- R (601) 605-3345

## DUAL ENROLLMENT/DUAL CREDIT

- DW (601) 605-3349

## eLEARNING

- DW (662) 472-9162

## FINANCIAL AID

- GM (662) 472-9027
  - GR (662) 227-2357
  - R (601) 605-3422
- P.O. Box 216, Goodman, MS 39079  
finaid@holmescc.edu

## PHI THETA KAPPA ADVISORS

- GM (662) 472-9070
- GR (662) 227-2325
- R (601) 605-3304

## RECRUITING

- GM (662) 472-9055
- GR (662) 227-2324
- R (601) 605-3320

## STUDENT HOUSING

- GM (662) 472-9001
- P.O. Box 369, Goodman, MS 39079

## STUDENT SUPPORT SERVICES

- DW (662) 472-9037

## WORKFORCE DEVELOPMENT

- GM (662) 472-9172
- GR (662) 227-2349
- R (601) 605-3370

## GOODMAN CAMPUS

(662) 472-2312  
1 Hill Street  
Goodman, MS 39079

## GRENADA CAMPUS

(662) 226-0830  
1060 J. K. Avent Drive  
Grenada, MS 38901

## RIDGELAND CAMPUS

(601) 856-5400  
412 W. Ridgeland Avenue  
Ridgeland, MS 39157

## ATTALA CENTER

(662) 290-0808  
620 W. Jefferson St.  
Kosciusko, MS 39090

## YAZOO CENTER

(662) 472-9070  
637 E. 15th Street  
Yazoo City, MS 39194

Holmes

## A HIGHER STANDARD

After more than 90 years, our success in educating Mississippi's students speaks for itself. Our programs are accredited by the Southern Association of Colleges and Schools Commission on Colleges, and we have an articulation agreement with the eight public, four-year institutions of higher learning in the state.

*No Place  
Like Holmes*

